

*The*

# ITALIANATE



*Main Level 908 square footage*

*Upper Level 896 square footage*

*Total Square Footage 1804*

*3 Bedrooms, 2 1/2 Bathrooms*

*Unfinished Basement 908 square footage*

*Optional Sun Room 144 square footage*

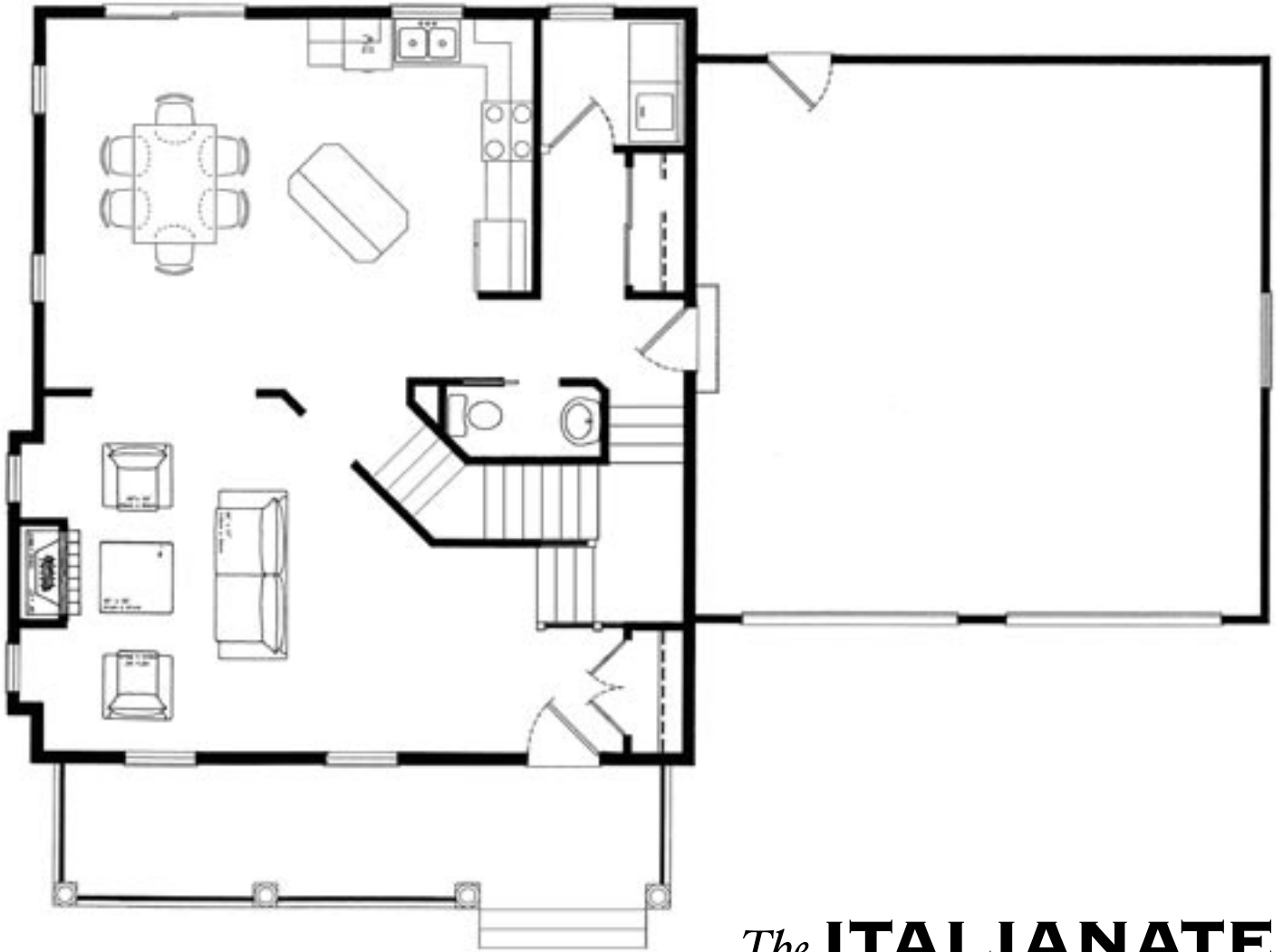
*Popularized by Andrew Jackson Downing in the 1850's, the Victorian Italianate style, was extremely ornate and often painted exterior colors that echoed the grass, rocks and trees of the surroundings. With long porches, tall windows and vibrant exterior coloring, these homes offer wonderful facade.*

*Another derivative of dreamy Victorian architecture, the Queen Anne (exterior option) is known for its asymmetrical facades, curved towers and porches, protruding bay windows, steeply pitched roofs and elaborate spindle work ornamentation.*

*Interesting side-note: When Walt Disney designed Main Street in Disney Land, he patterned his buildings off of Victorian architecture in order to create an accurate depiction of a marvelous, awe-inspiring 19th century small town.*

## LIFESTYLE CHARACTERISTICS

- Enter to the Heart of the Home with natural light cascading through an open living area and grand fireplace.
- Culinary Creations abound in this open kitchen and breakfast bar layout.
- Large Portico on an elevated building pad to create the pronounced look the Italianate has made famous.
- Cleverly-designed Corbels and Decadent Entry Door offers a historically accurate depiction of the design.



*The* **ITALIANATE**

